

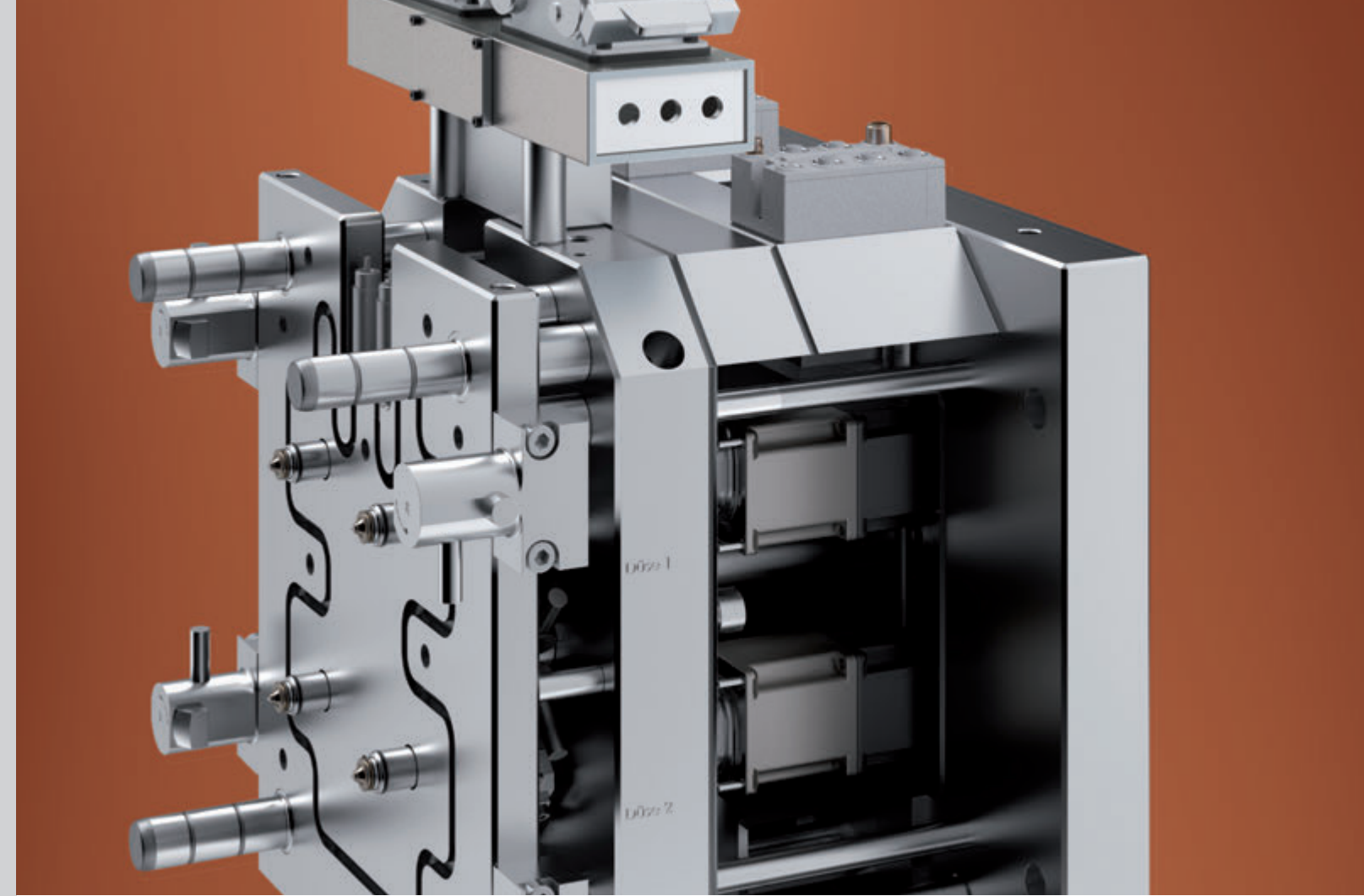


We develop individual solutions to meet your requirements – quick, precisely and flexibly. Seminars and optimal consulting or how to use our products contribute to a better understanding. In cooperation with our customers we focus our efforts on always being a competent and beneficial partner.

Almost 200 employees and a worldwide network of our partners at 33 locations are at your disposal. Due to our international structure we always have the exact knowledge of the market and product development trends as well as of business processes in the plastics industry.



GÜNTHER Heisskanaltechnik GmbH
 Sachsenberger Str. 1
 D-35066 Frankenberg
 Telefon: +49 (0) 6451 5008-0
 Telefax: +49 (0) 6451 5008-59
 info@guenther-heisskanal.de
 www.guenther-heisskanal.de
 05/2015



**We have a very individual
 point of view. Yours!**

SMA 10 Stepper Motor
 for single needle drive

ServoControl Control Device Single 1.0
 for up to 16 shut-off needles.



SMA 10 STEPPER MOTOR FOR SINGLE NEEDLE DRIVE UNIT

Benefits

- Simple installation and tool construction
- Maintenance free
- Without supply bore holes in the mounting plate

- Needle positioning accuracy: 1/100 mm
- Includes integrated needle reception
- Floating bearings for valve-gates

Stepper motor SMA 10

Up to 16 needles can be individually or simultaneously controlled with high precision by an external control device. One control module is used for two stepper motors in each case. Ideally, the control module for the stepper motor should be fitted directly onto the mould. The optional encoder serves to monitor the step loss. It is delivered ready for connection with pre-mounted industrial plug-in connectors. The maximum operating temperature for the stepper motors and control module is 50°C.

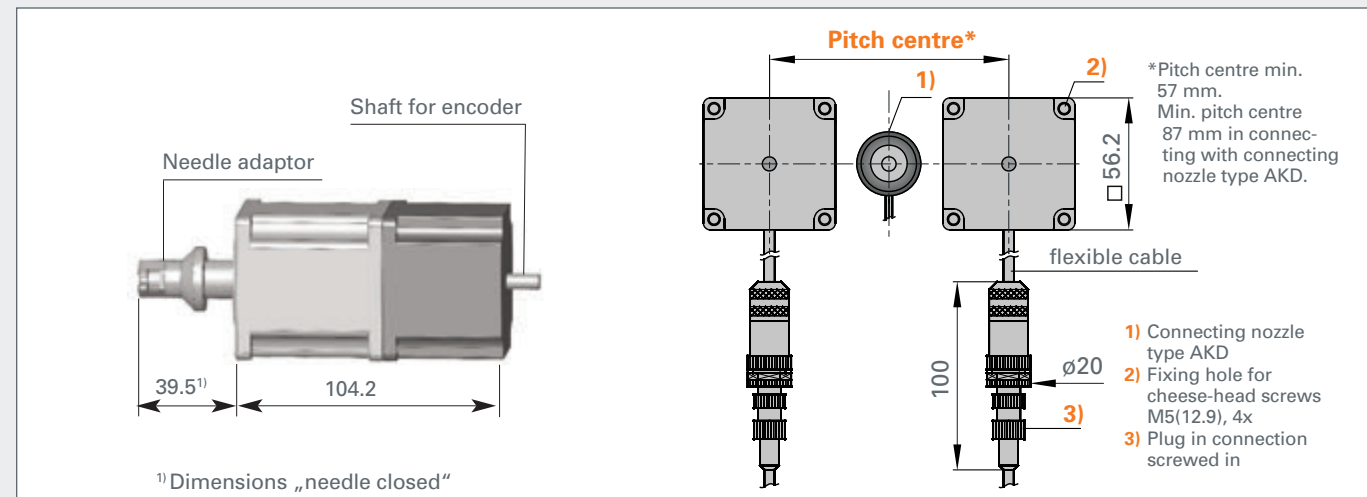
Applications

- Complex applications
- For fully electric or hybrid injection moulding machines
- Unrestricted clean-room compatibility

SMA 10 Stepper Motor

Hub: 12.7 mm
 Speed: adjustable, recommended 10-25 mm/s
 Clamping force: speed dependent
 ca. 700 N by 12.5 mm/s
 Dimensions: 56.2 x 56.2 x 104.2 mm

Technical Data



SMA 10 E Stepper motor with encoder



Control module for 2 motors

Gating-Diameter

Nozzle-ø mm	Needle-ø mm	Gating point-ø						
		0.8	1.0	1.2	1.4	1.6	2.0	2.5
4	2	•	•	•	•	○		
5	3	•	•	•	•	○		
6	3	•	•	•	•	•		
8	3						•	•

Gating point-ø: • Standard ○ on request

SERVOCONTROL DEVICE SINGLE SCE 1.0 FOR UP TO 16 SHUT-OFF NEEDLES

Benefits

- Handling via control keys and colour touch screen
- Plain, simple and easy-to-follow menu
- Removable control unit provides mobility
- One controller governs up to 16 individually controllable needles
- Needle position adjustable

- Needle adjustment range from 1/100 mm
- Simultaneous closing of the needles from different position possible
- Fully automatic operation
- 50 internal slots for mould-specific settings

ServoControl Single Device SCE 1.0

Due to the plain, simple and fully coloured menu of the ServoControl single, the current needle positions as well as the incoming and outgoing signals can be read at any time. The ServoControl single is handled via a touch screen and control keys.

The ServoControl single consists of modules and is equipped with a removable control unit providing a high degree of mobility and flexibility.

The parameters of the ServoControl single can be adjusted according to its application. There are 50 slots for storing settings and tool data. The ServoControl single can be integrated into the emergency-stop system of the injection moulding machine in order to increase the operational safety.

ServoControl Single SCE 1.0

Nominal voltage: 1-phase, 220-240 VAC* 50/60Hz
 Required fuse: F 16 A
 Interface to the injection moulding machine: 48-pin plug connector
 Signal voltage: 24 VDC **
 Dimensions: WxHxD= 380 x 300 x 350 mm
 Weight: approx. 25.0 kg

*Volt Alternating Current
 **Volt Direct Current

ServoControl Device Single SCE 1.0



Order code	Needle quantity
2SCE1	2
4SCE1	4
8SCE1	8
12SCE1	12
16SCE1	16

A deviating configuration is available on request. The cable set is included in the scope of supply.

Wiring diagram

