



## **HOT-RUNNER NOZZLE TYPE „ET1“**

The perfect solution for high temperature applications

# HOT RUNNER NOZZLE TYPE „ET1“

## NOTES

In single-nozzle systems the size of the locating ring and screws has to compensate for the developing drive power.

The pitch circle of the screws must be as small as possible.

The nozzles must be installed with an initial tension of 0.02 mm to 0.05 mm.

In all cases, the single-nozzle can be used only with a heated machine nozzle.

Thanks to the power and temperature connection, the nozzle is suitable for high temperature applications.

- 190** Recess for the power and temperature connection
- q1** Height of head with radius R/ angle W
- q2** Height of head without radius R/ angle W
- R/W** The construction of the machine nozzle determines which type of connecting piece should be use (straight, radius R/ angle W)

If you have any questions, please call our technical consulting, tel.: +49 (0) 6451 5008-0.

## ORDER CODE

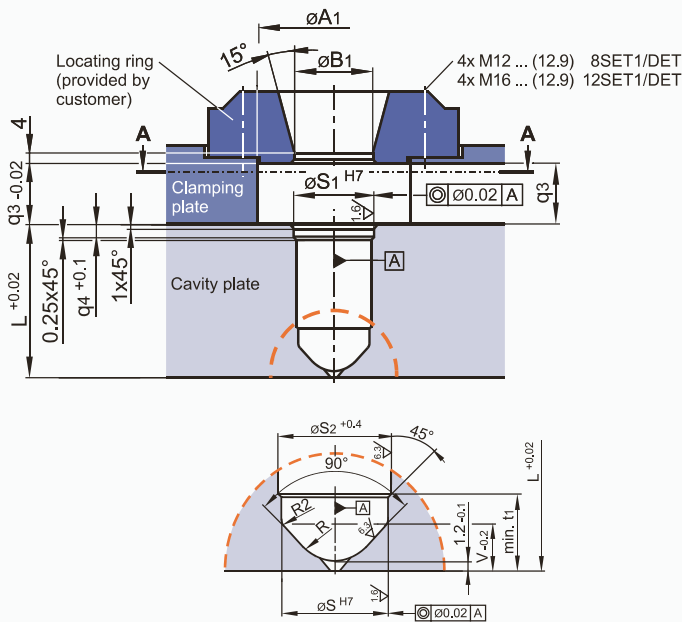
Example: Single-nozzle 8SET1-80 / R 40  
 8 = Material tube-Ø 7.5 mm  
 SET1 = Open single-nozzle with tip  
 80 = Length 80 mm  
 R 40 = Radius 40 mm

Please indicate in your order following:  
 Material type, article, part weight, kind of gating, gate-Ø and machine nozzle radius/angle.

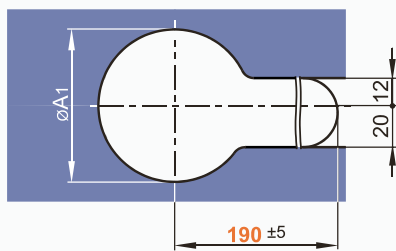


GÜNTHER System-Designer  
 www.guenther-heisskanal.de/cadhoc

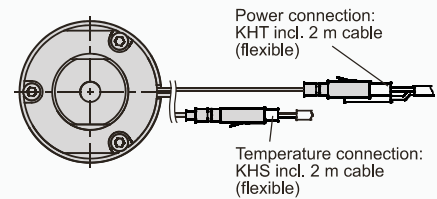
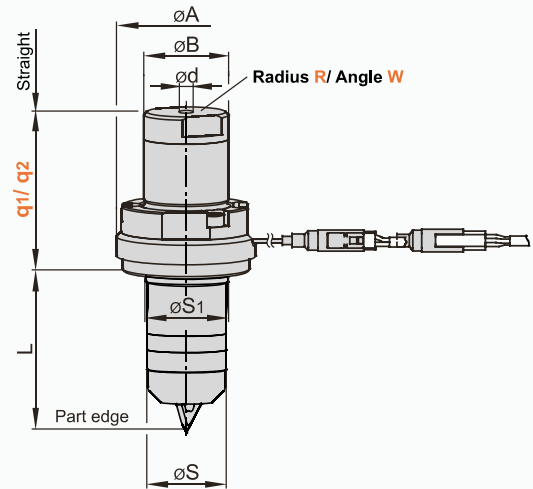
## Assembly



**View A-A:**  
 Clamping plate with cut-out for nozzle head, power and temperature connection



## Single-nozzle with shaft



## DIMENSIONS

Nozzle size/ -type	Nozzle (mm)							Assembly (mm)								
	$\phi A$	$\phi B$	$\phi d$	q1	q2	$\phi S$	$\phi S_1$	$\phi A_1$	$\phi B_1$	q3	q4	R	$\phi S_2$	t1	V	
8SET1/-DET1	52	28	7.5	53	51	26	27	56	30	22	5	8	26.5	35	10.9	
12SET1/-DET1	65	45	12	55	52	38	39	70	47	27	10	12	38.5	39	15.3	

## DELIVERY TIME

Nozzle size/ -type	Nozzle length L (mm)							
	50	60	80	100	120	150	200	250
8SET1/-DET1	●	●	●	●	●	○	○	○
12SET1/-DET1		●	○	●	○	○	●	○

● = short delivery time, ○ = delivery time upon request



GÜNTHER Heisskanaltechnik GmbH  
 Sachsenberger Str. 1  
 35066 Frankenberg/ Eder, Germany  
 Tel.: +49 (0) 6451 5008-0  
 Fax.: +49 (0) 6451 5008-50  
 info@guenther-heisskanal.de  
 www.guenther-heisskanal.de  
 10/2015